



## Program Overview:

### BlackFacts Experiential Innovation Consortium (BEIC)

---

A Program of the [BlackFacts Educational Foundation](https://blackfacts.org) (<https://blackfacts.org>) (501c3)

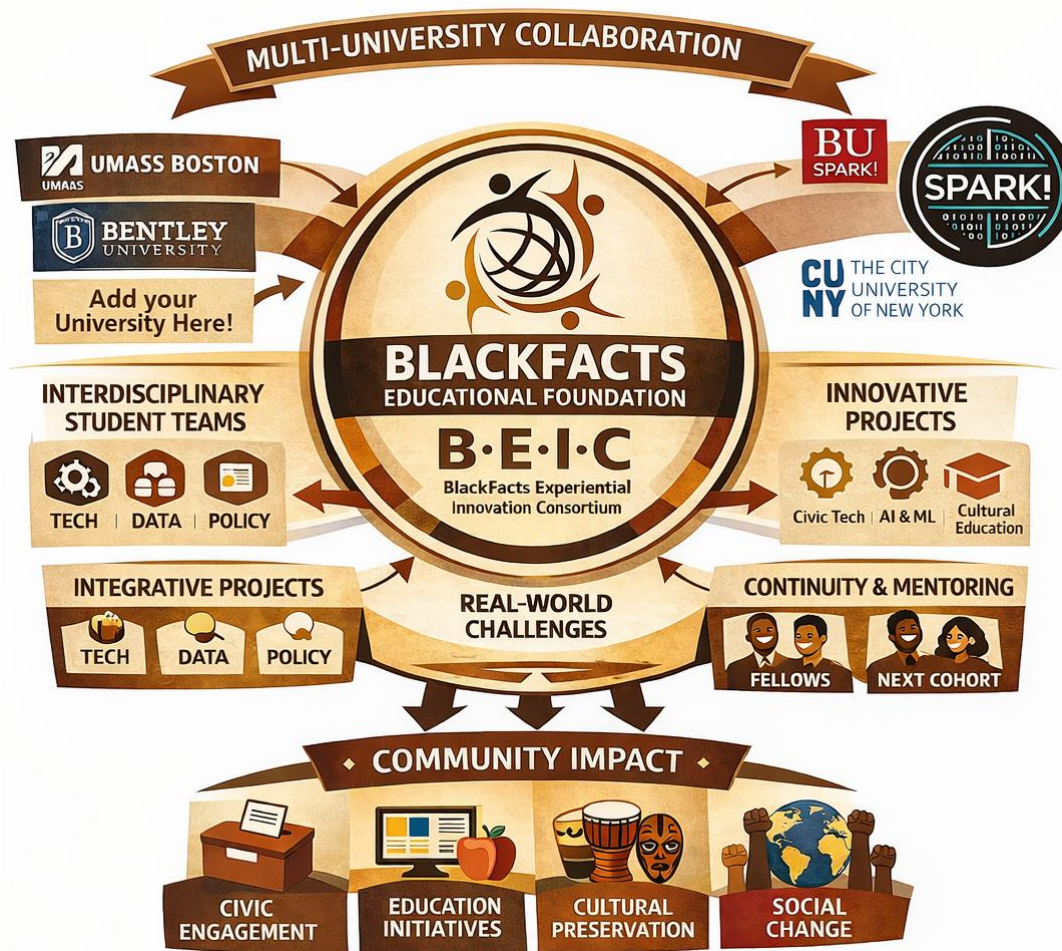


**“Advancing Culture Through Collaborative Innovation.”**

#### **I. Executive Summary**

The BlackFacts Experiential Innovation Consortium (BEIC) is a multi-university collaborative innovation initiative housed within the BlackFacts Educational Foundation. The Consortium enables universities and their students to work on real-world, mission-driven technology projects spanning civic innovation, artificial intelligence, cultural technology, user experience design, data science, and public-interest computing.

Building upon successful engagements such as the Boston University Spark UI/UX redesign of BlackFacts.com and current CivicChat collaborations, BEIC expands the experiential learning model into a cross-institutional ecosystem designed to accelerate innovation, foster interdisciplinary collaboration, and produce scalable community impact. Our goal is to expand the concept further to include other local universities in a Phase 1 rollout for Fall 2026.



## II. Vision & Purpose

### Vision

To establish a national model for cross-university experiential innovation that advances civic technology, cultural empowerment, and AI-driven educational systems.

### Purpose

To connect students, universities, and community-centered technology platforms in a structured, modular, and scalable collaboration framework that produces real-world deliverables and measurable social impact.

## III. Foundational Principles

- Real Platforms. Real Users. Real Impact.

- Hybrid Project Focus (UX, AI, Data, Civic Tech, Cultural Technology, Product Innovation, FinTech).
- Modular, Semester-Scoped Deliverables.
- Cross-University Collaboration and Shared Innovation.
- Continuity Through Fellowship and Mentorship Tracks.
- Ethical, Inclusive, and Community-Aligned Development.

## IV. Governance Structure

### 1. Foundation Leadership

The BlackFacts Educational Foundation serves as project owner and strategic authority. The Foundation retains intellectual property, maintains infrastructure, provides datasets, and ensures long-term roadmap alignment.

### 2. University Partners

Partner universities provide faculty sponsors, academic credit frameworks, student recruitment, and institutional support. Universities collaborate in alignment with Foundation-defined scope.

### 3. BEIC Program Office

The BEIC Program Office coordinates cross-campus collaboration, standardizes documentation, manages onboarding, and ensures continuity across semesters.

## V. Engagement Models

### Model A – Single-School Studio

A focused semester-long engagement between the Foundation and one university team. Best suited for clearly scoped deliverables such as UX redesign, data analysis modules, or prototype development.

### Model B – Multi-School Joint Studio

A collaborative model where multiple universities contribute complementary expertise to a shared flagship project. For example, one institution may lead AI/ML, another UX, and another product strategy.

### Model C – Innovation Fellowship Track

High-performing students may continue beyond a semester as fellows, supporting continuity, mentorship, and institutional knowledge retention.

## VI. Project Lifecycle Framework

1. Discovery – Context briefing, architecture overview, and data access.

2. Define – Problem statements, scope validation, and success metrics.
3. Design / Architect – UX flows, system architecture, data models.
4. Build / Prototype – Functional development and integration.
5. Test & Validate – User testing, model validation, refinement.
6. Deliver & Handoff – Documentation, demos, roadmap for continuation.

## VII. Infrastructure & Collaboration Tools

Standardized collaboration tools ensure consistency across institutions. These include a Foundation GitHub organization, shared Slack workspace, centralized documentation hub, onboarding deck, and standardized project brief templates.

## VIII. Intellectual Property & Ethics

The Foundation retains ownership of intellectual property developed through BEIC projects. Students may include non-confidential work in portfolios. Ethical review considerations apply to AI, data, and civic-facing tools.

## IX. Flagship BEIC Initiatives

- BlackFacts.nyc – AI-powered curriculum acceleration/enablement platform.
- CivicChat – Civic information systems leveraging AI and data integration.
- Cultural Discovery Engine – Enhanced semantic search and knowledge mapping.
- Diversity Schoolhouse Enhancements – AI-integrated classroom engagement systems.

## X. Strategic Impact

BEIC establishes the BlackFacts Educational Foundation as a national hub for experiential civic innovation. Through structured collaboration, the Consortium accelerates project delivery, strengthens university partnerships, and produces technology systems that empower communities, educators, families, and civic institutions.

To Learn More Contact:

Dale Dowdie

Email: [ddowdie@blackfacts.org](mailto:ddowdie@blackfacts.org)

Mobile: (781) 858-6852

Web: <https://blackfacts.org>